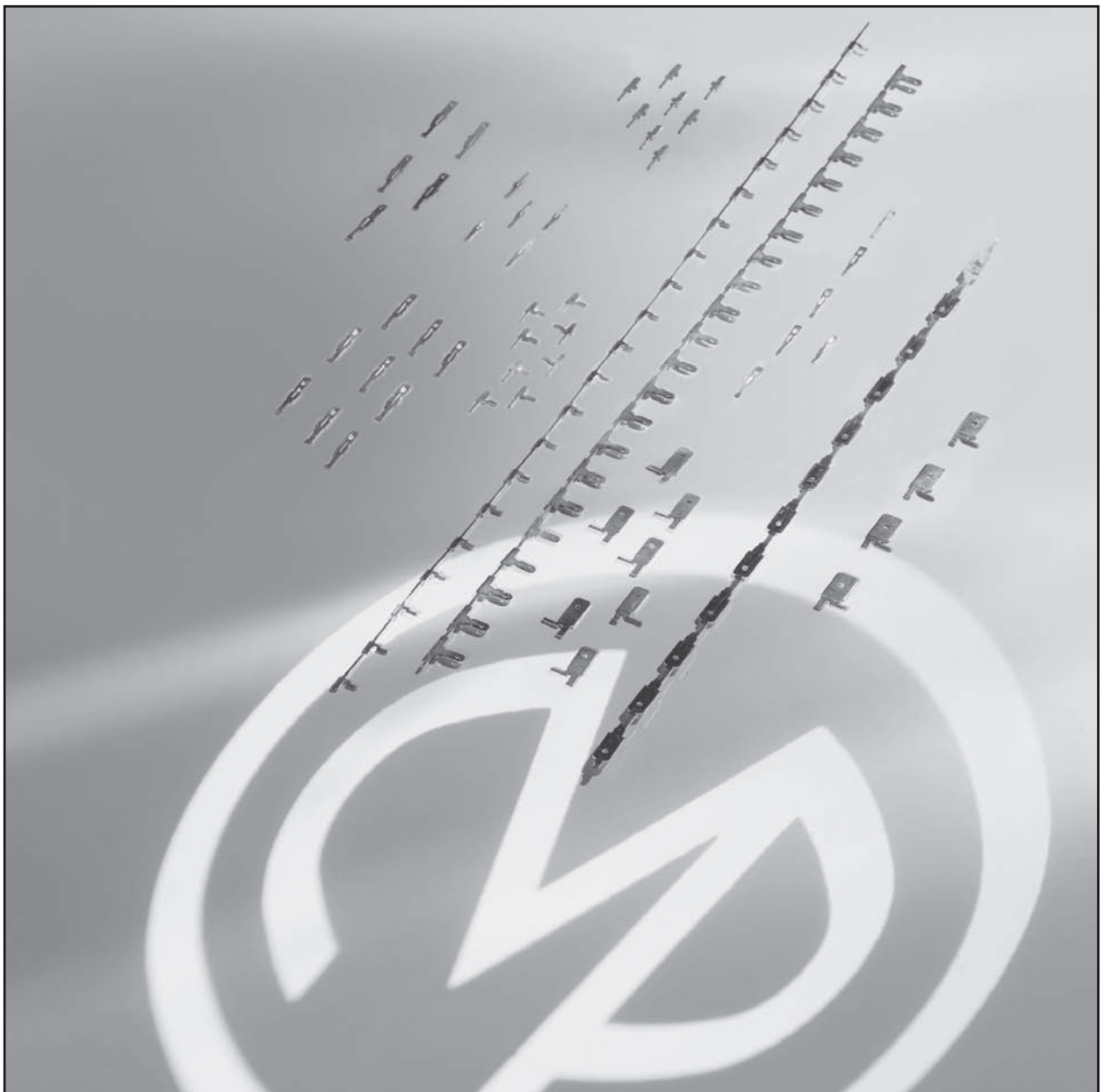


# TERMINALS




**MILES · PLATTS**

- All terminals & wire are now converted to lead free
- TBS 900 series to suit A and S ranges
- TBS 600 series to suit M range
- Solderability test to BS 2011 1981
- Round, square and serrated wire available
- Retention tests performed to assure connection integrity



Miles-Platts are technical moulders - we manufacture more than bobbins - please contact sales for details

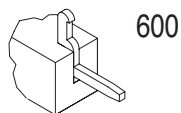
 **UL RECOGNISED  
MOULDER - E176491**

Section 10

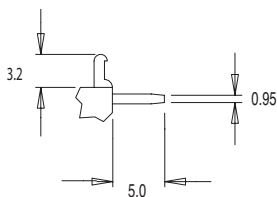
**1**



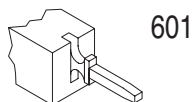
TBS 600 Range Terminals (P.C.B. Type)



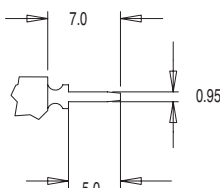
600



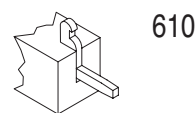
Matl. 0.6



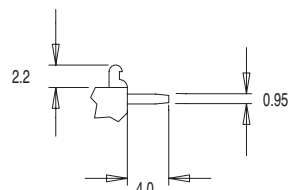
601



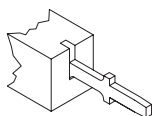
Matl. 0.6



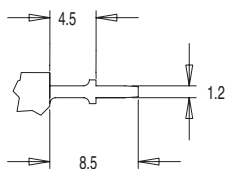
610



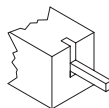
Matl. 0.5



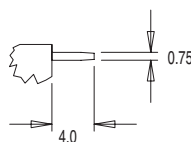
611



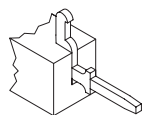
Matl. 0.6



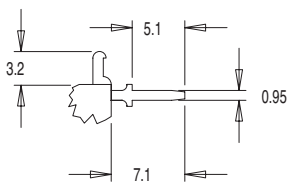
621\*



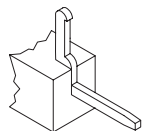
Matl. 0.5



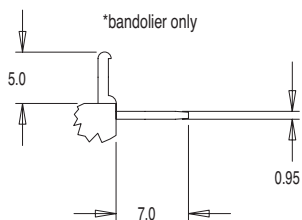
630



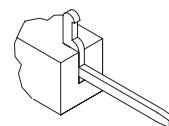
Matl. 0.6



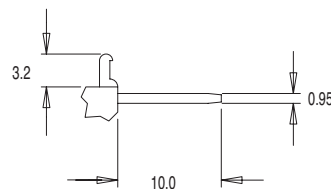
640



Matl. 0.6



650



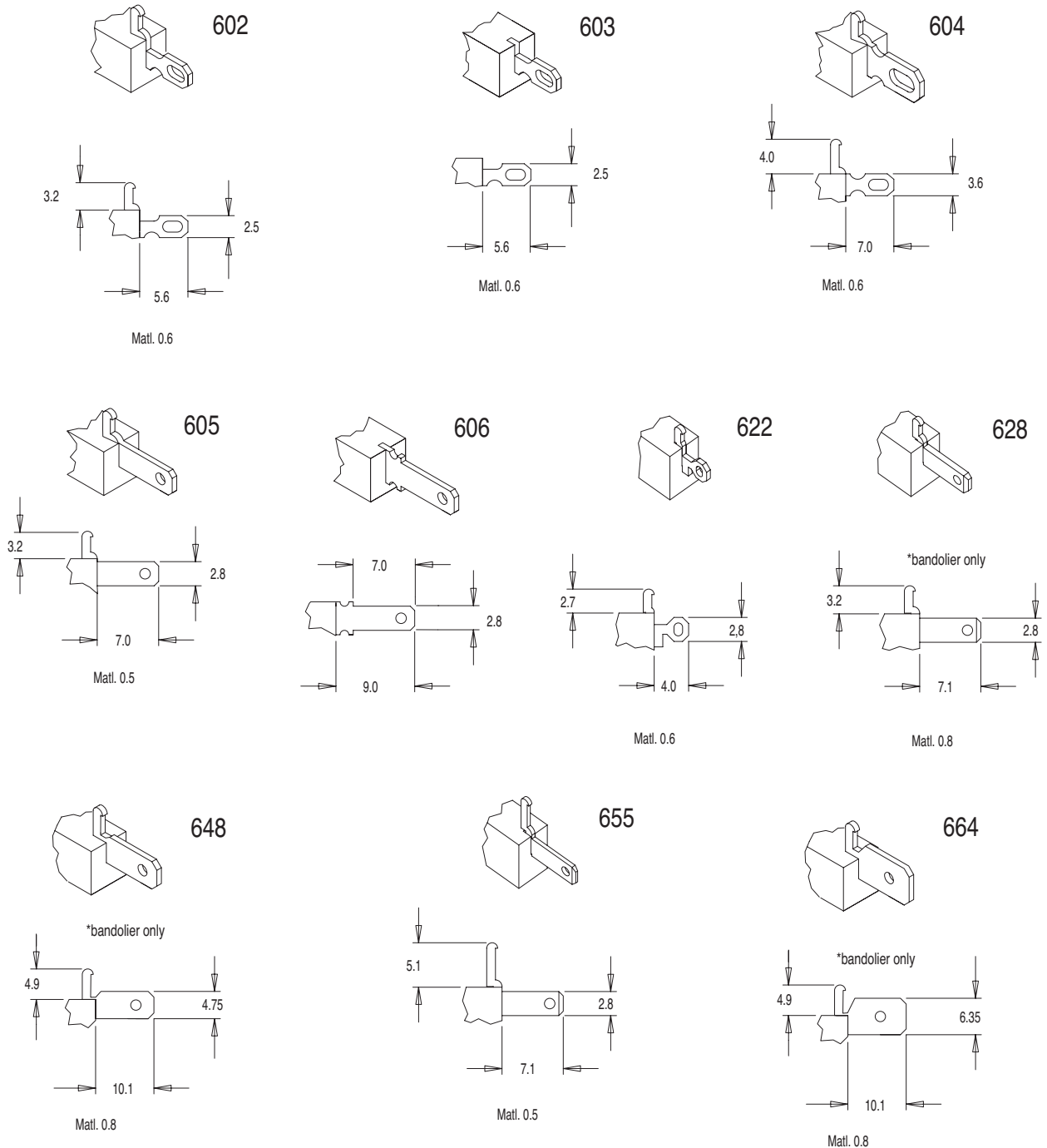
Matl. 0.6

Standard materials: CZ108 (CuZn37) half hard brass with 100% matt tin finish. Solderability test to BS2011: 1981. Dimensions in millimetres. All terminals are lead-free. \*Contact sales office for availability.



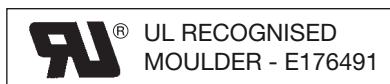
# Terminals

## TBS 600 Range Terminals (Solder/Fast-on Type)



Standard materials: CZ108 (CuZn37) half hard brass with 100% matt tin finish Solderability test to BS2011: 1981  
Dimensions in millimetres All terminals are lead-free

Most products are available direct from stock with same day despatch - please contact sales for details





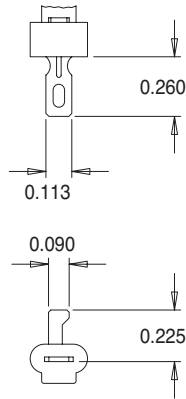
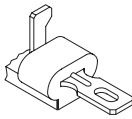
# Terminals

For 'S' or 'A' Range Bobbins

## TBS 900 Range (Standard Terminal Pocket)

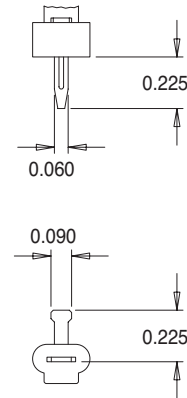
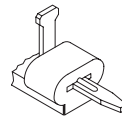
TBS 902

Matl 0.020



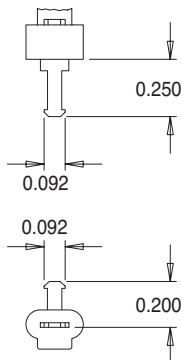
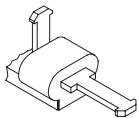
TBS 903

Matl 0.020



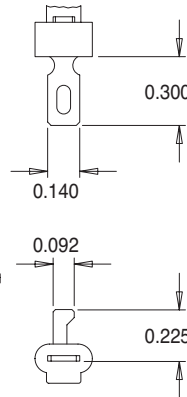
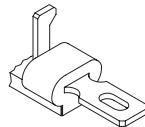
TBS 906

Matl 0.024



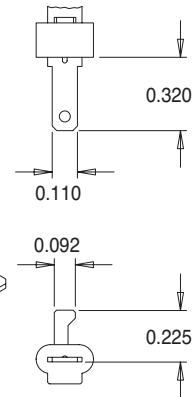
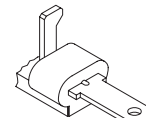
TBS 908

Matl 0.024



TBS 909

Matl 0.020

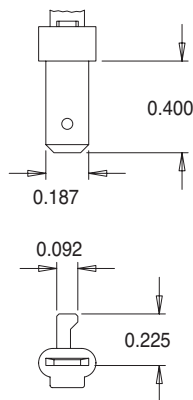
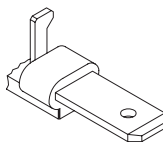


TBS 918

\*bandolier only  
Matl 0.032

TBS 931

Matl 0.020

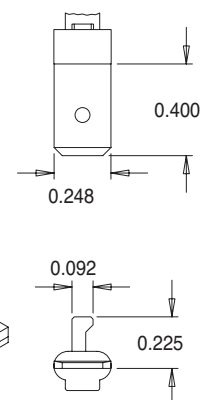
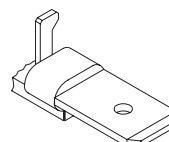


TBS 924

Matl 0.032

TBS 930

Matl 0.020



Standard materials: CZ108 (CuZn37) half hard brass with 100% matt tin finish Solderability test to BS2011: 1981  
Dimensions in inches All terminals are lead-free

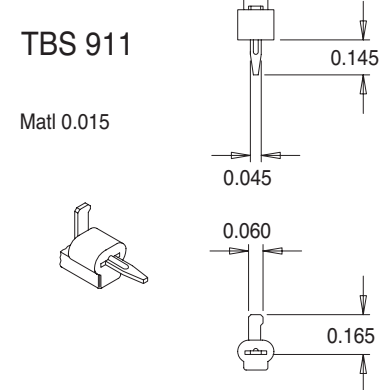
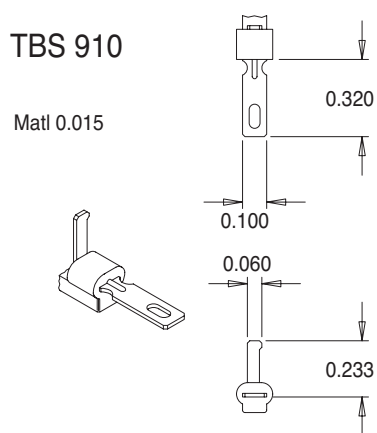
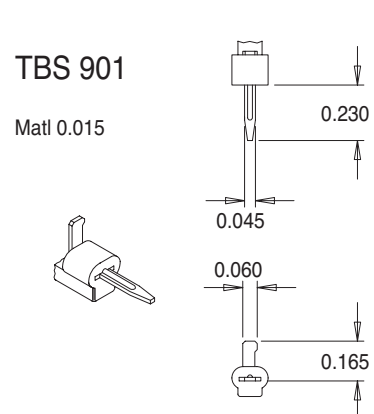
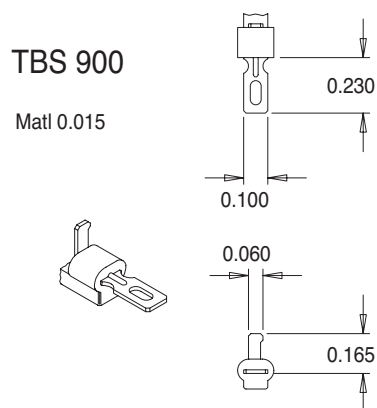


# Terminals

For 'S' or 'A' Range Bobbins

## TBS 900 Range

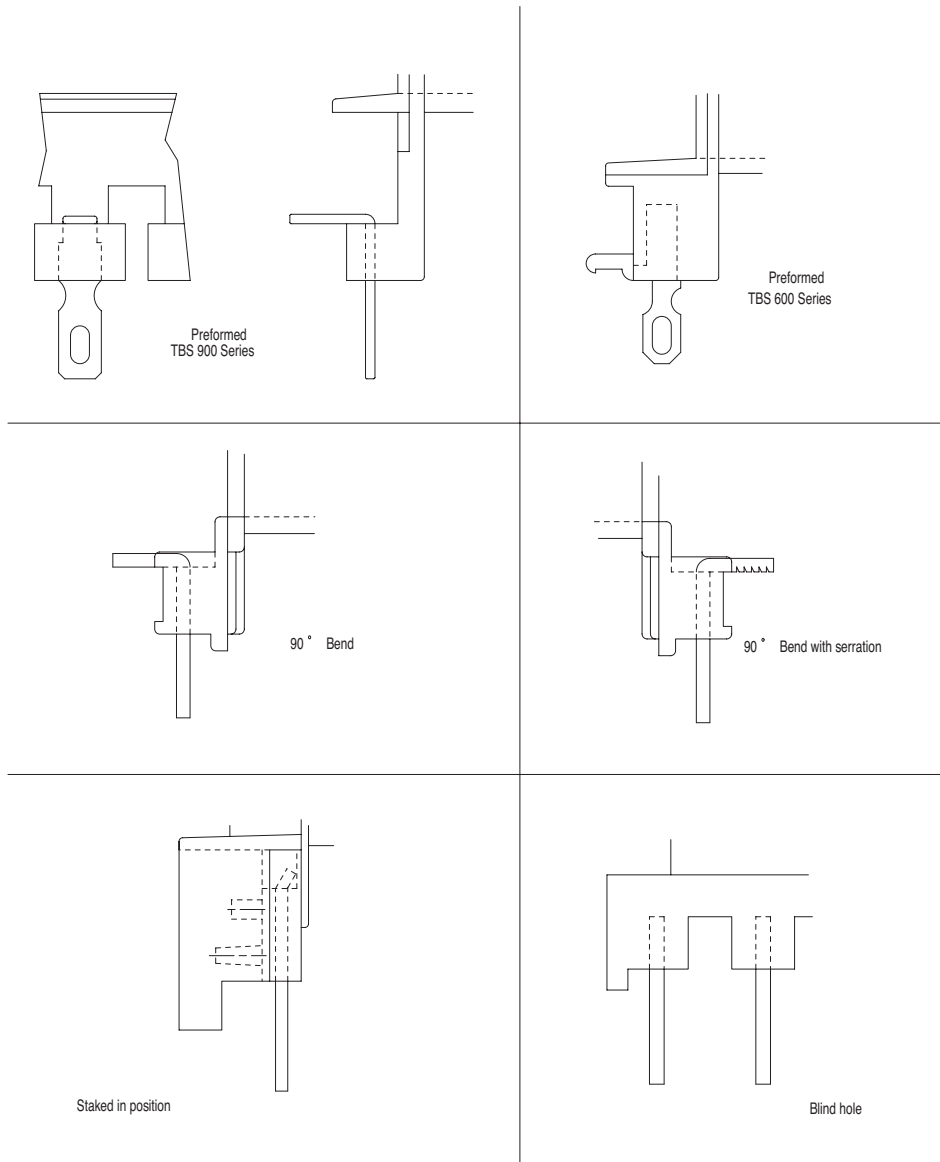
Small Terminal Pocket for 18 (US EI-560), 145 (US EI-625) & 74 (US EI-68) Bobbin Sizes



Standard materials: CZ108 (CuZn37) half hard brass with 100% matt tin finish Solderability test to BS2011: 1981  
Dimensions in inches All terminals are lead-free



# Pin Insertion Methods



## Glossary of Terms - The following is a selected list of industry related terms associated with solderability.

- Activator** A compound added to flux to increase flux efficacy.
- Cold Joint** A commonly used term that refers to a poor quality solder joint.
- Dewetting** Retreat of solder from all or part of joint surfaces, which were initially wetted, leaving an insufficient layer of solder.
- Dip Soldering** The method of soldering adopted by Miles-Platts in which the material to be soldered is fluxed, then dipped into a bath of molten solder.
- Dross** Oxidised solder that forms as a residue in solder baths.
- Efficacy** Term used to describe the level of fluxing activity exhibited by a particular flux.
- Flux** Material used to improve the flow properties of molten solder and the wetting of metallic substrates.
- Liquidus** The temperature at which an alloy becomes fully liquid.
- Solderability** The term used to measure the ease with which a material may be soldered with a particular combination of solder and flux.
- Tinning** A pre-coating of a metallic surface with molten solder to protect from oxidation and preserve solderability.
- Wetting** Spreading of a coating of molten solder on a metallic substrate and production of an intermetallic compound.