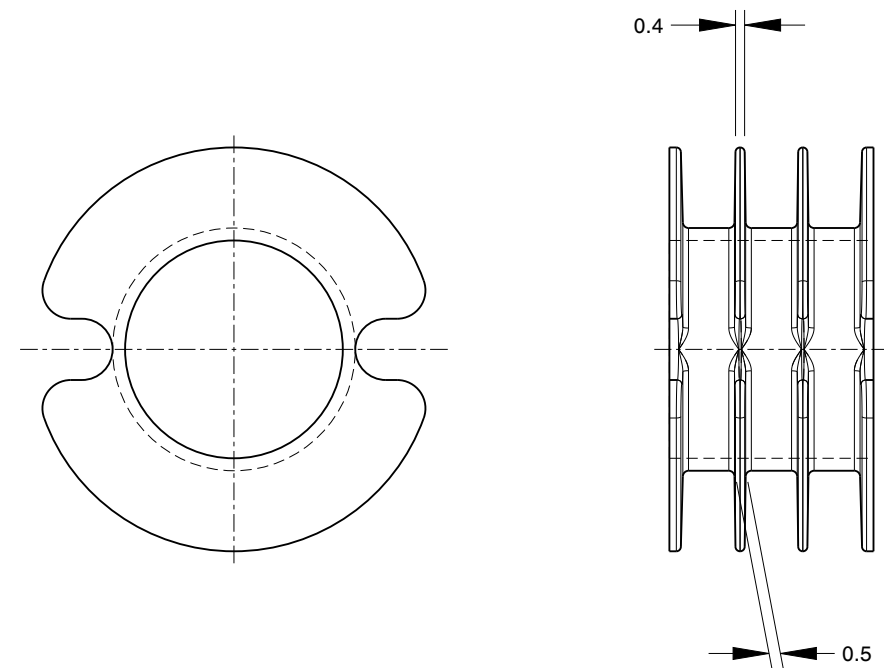
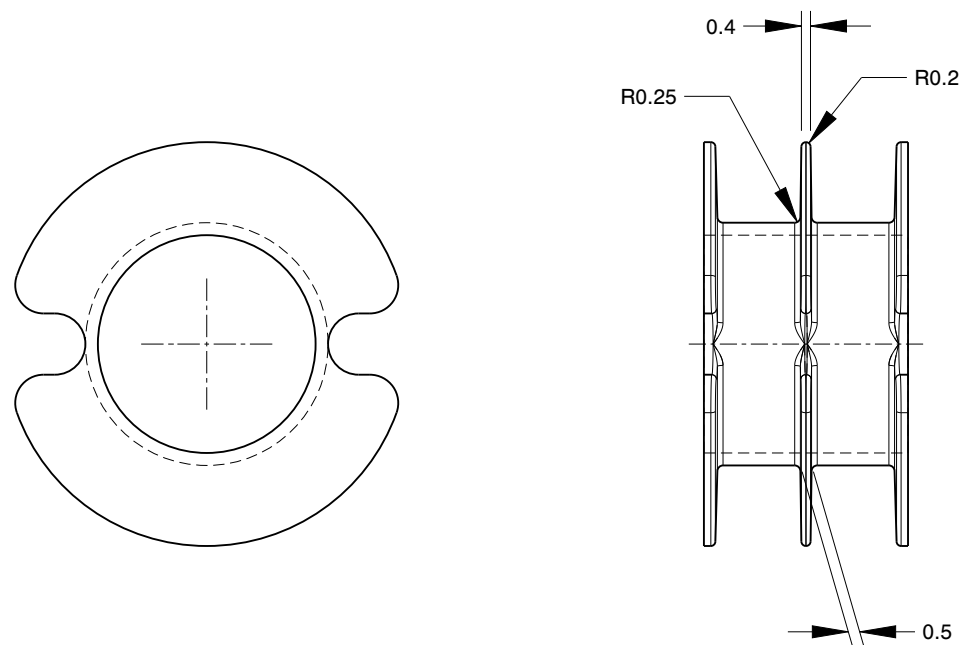


P22/13 - 1 SECTION BOBBIN
PART No. P22131



P22/13 - 3 SECTION BOBBIN
(EQUAL SECTIONS)
PART No. P22133



P22/13 - 2 SECTION BOBBIN
(EQUAL SECTIONS)
PART No. P22132

O/S E.C.N'S.			
1		25-11-25	A.M.
Iss.	ECN No.	Date.	App.

MILES PLATTS LTD. 

UNIT Z, BLABY INDUSTRIAL PARK, WINCHESTER AVENUE,
BLABY, LEICESTER, LE8 4GZ, UNITED KINGDOM.

THIS DRAWING IS CONFIDENTIAL AND IS ISSUED ON
THE UNDERSTANDING THAT IT WILL NOT BE COPIED,
REPRODUCED OR EXHIBITED TO A THIRD PARTY WITHOUT
THE WRITTEN PERMISSION OF MILES PLATTS LTD.

© COPYRIGHT MILES PLATTS LIMITED.

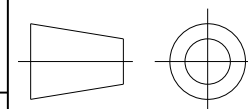
ALL DIMENSIONS IN MILLIMETRES

TOLERANCE TO DIN 16742 TG6
UNLESS OTHERWISE STATED

MATERIAL.
PBT
30% GLASS FILLED
BLACK
TO UL 94V-0

SCALE. 3:1

THIRD ANGLE
PROJECTION



TITLE.
**P22/13 - 1,2 & 3 SECTION
BOBBINS**

PART No.
SEE ABOVE

DR'G. No.
A3-1580