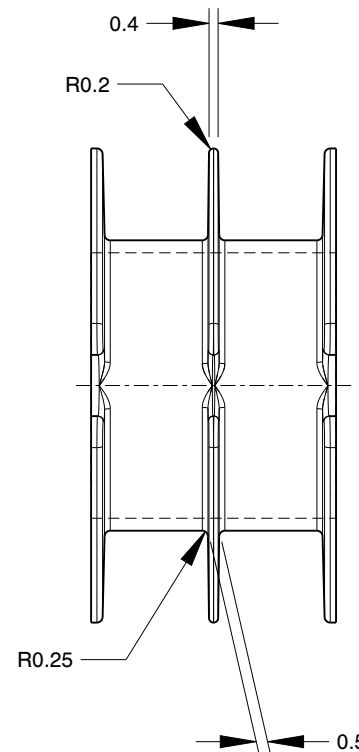
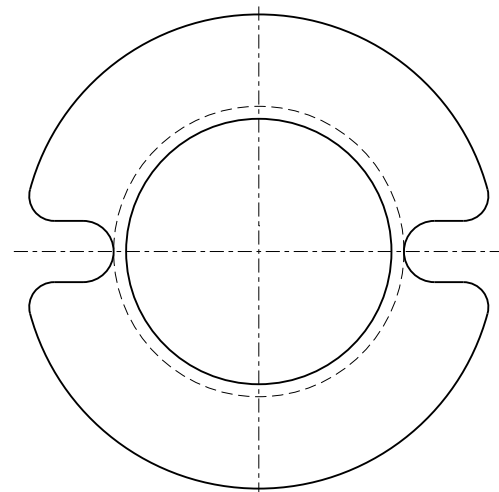


P22/16 - 1 SECTION BOBBIN  
PART No. P22161



P22/16 - 2 SECTION BOBBIN  
(2 EQUAL SECTIONS)  
PART No. P22162

O/S E.C.N'S.

1		26/11/25	A.M.
Iss.	ECN No.	Date.	App.

**MILES PLATTS LTD.** 

UNIT Z, BLABY INDUSTRIAL PARK, WINCHESTER AVENUE,  
BLABY, LEICESTER, LE8 4GZ, UNITED KINGDOM.

THIS DRAWING IS CONFIDENTIAL AND IS ISSUED ON  
THE UNDERSTANDING THAT IT WILL NOT BE COPIED,  
REPRODUCED OR EXHIBITED TO A THIRD PARTY WITHOUT  
THE WRITTEN PERMISSION OF MILES PLATTS LTD.

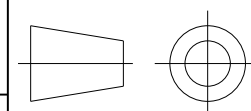
© COPYRIGHT MILES PLATTS LIMITED.

ALL DIMENSIONS IN MILLIMETRES

TOLERANCE ON DIMENSIONS  
TO DIN 16742 TG6  
UNLESS OTHERWISE STATED

**MATERIAL.**  
PBT  
30% GLASS FILLED  
BLACK  
TO UL 94V-0  
**SCALE.** 3:1

**THIRD ANGLE  
PROJECTION**



**TITLE.**  
P26/16  
1 & 2 SECTION BOBBINS  
**PART No.** SEE ABOVE  
**DR'G. No.** A3-1581